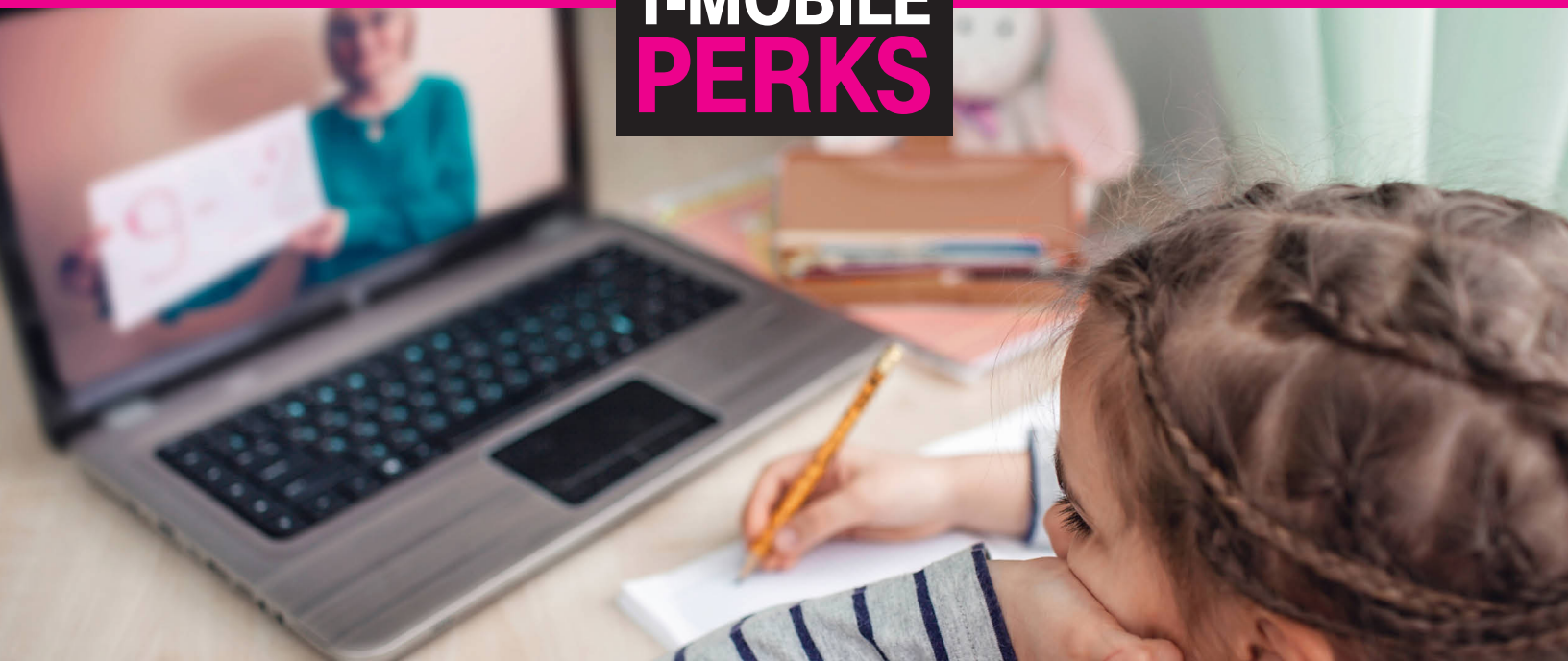


Because you work at
District 49

**T-MOBILE
PERKS**



**SWITCH
& SAVE \$200**

Get premium features like Netflix, international texting and data, and free stuff every week with T-Mobile Tuesdays—all with taxes and fees included.

Netflix: 2+ lines req'd. Standard, up to 2 HD screens.

with **\$10/mo discount** on premium
UNLIMITED Talk, Text and Data!

Req. new acct. on Magenta Plus with Autopay & validation. \$5/mo./line discount up to 2 lines for 20 mo. 1st credit applied w/i 2 bills. During congestion, customers using >50GB/mo. may notice lower speeds than other customers due to data prioritization. Video typically streams on smartphone at DVD quality (480p).

Be sure to mention your employer to receive this offer.

 **855-570-9947**

 **<https://t-mo.co/30SmlQ3>**

 **t-mobile.com/store-locator**

Additional Perks Information:
<https://t-mo.co/30SmlQ3>
New & existing customers may
call: 855-570-9947

 **T-MOBILE
FOR BUSINESS**

Limited time offer, subj.to change **T-Mobile Perks**: Qualifying credit, new acct. with 12 or less lines, & port- from AT&T, Verizon, or Claro required. Validate eligible employment w/i 30 days of activ. (ongoing verification). Must be active & in good standing to receive credits. Credits may stop if you cancel a line. May not be combined with some offers/discounts. Restrictions apply. Limit 1 T-Mobile Perks Corp node per acct. **Magenta Plus**: Credit approval, deposit, \$10 SIM card, and, in stores & on customer service calls, \$20 assisted or upgrade support charge may be req. Unlimited talk & text features for direct communications between 2 people; others (e.g., conference & chat lines, etc.) may cost extra. Unlimited high-speed data US only. In Canada/Mexico, up to 5GB high-speed data then unlimited at up to 256kbps. Not avail. for hotspots & some other data-first devices. Capable device required for some features. Activ. required to deliver video streams at speeds that provide **Netflix**: Receive Netflix Standard (up to a \$12.99/mo. value) with 2+ qual'g lines in good standing. Value may be applied to different Netflix streaming plans. Not redeemable or refundable for cash. Cancel Netflix anytime. Terms apply: www.netflix.com/termsofuse. 1 offer per T-Mobile acct.; may take 1-2 bill cycles. See t-mobile.com/netflix for add'l info. For the small fraction of customers using >50GB/mo., primary data usage must be on smartphone & is prioritized over MHS (tethering) usage, which may result in higher speeds for data used on smartphones. Service may be terminated or restricted for excessive roaming. **Coverage** not available in some areas. **Network Management**: Service may be **slowed, suspended, terminated, or restricted** for misuse, abnormal use, interference with our network or ability to provide quality service to other users, or significant roaming. See T-Mobile.com/OpenInternet for details. See **Terms & Conditions** at www.T-Mobile.com. T-Mobile, the T logo, Magenta & the magenta color are registered trademarks of Deutsche Telekom AG. © 2020 T-Mobile USA, Inc. N205411

These materials are neither sponsored nor endorsed by the Board of Education of District 49, its chief education officer, or any zone or school officials.